

METALLICS

KEY RESIN COMPANY



Commercial



Hospitality



Corridors

Key Resin Metallics are highly decorative coating systems with a bright metallic finish. Metallics are installed using a variety of techniques resulting in unique, one-of-a-kind, artistic results. High gloss, satin and matte finish options are available.

ADVANTAGES

- Unique signature designs
- Excellent clarity and color
- Low odor during application and cure
- Multiple effects and colors possible
- Easy to maintain
- Available in 'fast cure' systems

TYPICAL USES

- Residential, interiors and garage
- Office spaces
- Hospitality and restaurant use
- Commercial areas
- Lobbies and corridors
- Light industrial applications

Key Resin Company provides this color guide for preliminary color selection only. Please refer to a physical sample prior to making a final selection. Contact your local Key Resin Representative for assistance or contact the main office.



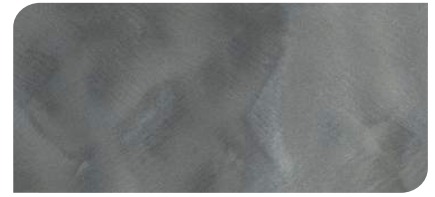
METALLIC STANDARD COLORS



PEARL
KLM001



DOLPHIN
KLM002



MANATEE
KLM003



WHALE
KLM004



GUAVA
KLM007



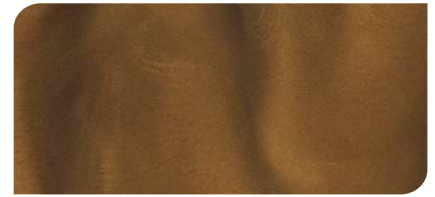
OVERCAST
KLM008



SANDAL
KLM012



RUM
KLM015



SHIPWRECK
KLM016



CORAL
KLM020



CARRIBEAN
KLM040



MAUI
KLM042

* Premium color, available upon request and additional surcharges apply.



CUSTOM COLORS?
just ask!

